



Guadalupe Climate Action Plan Information Packet for Outreach

Project Information

Project:

- The Guadalupe Climate Action Plan

Period:

- Calendar Years, 2025 and 2026



Motivation:

- Recent climate-related disasters indicate a growing climate crisis in the world.
- Fortunately, California is at the fore-front of taking action and has set priority areas of focus
- Guadalupe recognizes the need and its General Plan requires a Climate Action Plan (CAP). Hence the Guadalupe CAP Project.

Your Role as a Resident or Stakeholder:

- Express what you wish or are willing to do for a better environment



About Climate Action Planning

What is a Climate Action Plan?



- A **State mandated framework** for environmental preservation
- **Addresses key problem areas that contribute to climate change** and impose problems on communities

• Cities take steps via Climate Action Plans with **goals, policies and programs** to

- lower **air pollution**;
- become more **energy efficient**;
- improve **public transportation** to lower automobile use; and
- promote **healthier living environments**.



Priority Areas of Action

What are Priority Areas of Action?

Priority Areas of human activity to help reduce the emissions of greenhouse gases that cause global warming include the following:

1. Transportation



More public transit options



Bike lanes and pedestrian path



Electric vehicle incentives



Carpooling and ride-sharing programs

- Transition to zero-emission vehicles (ZEV) like electric vehicles
- Reduce car use and increase walking, biking, and public transit
- Place housing and other compatible activities near each other (termed, mixed use)

2. Industry



Stricter regulations on emissions



Investment in green jobs



Support for low-emission innovations



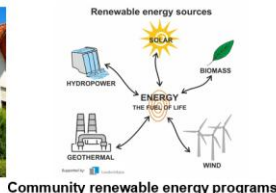
Incentives for green manufacturing

- Transition to clean technologies that do not depend on oil, gas, coal and wood
- Transition to sustainable standards
- Replace use of dirty fuels with use of clean fuel

3. Energy



Solar panel installations



Community renewable energy programs



Incentives for home energy efficiency



Upgrading the power grid

- Replace energy sources that warm the planet with renewable energy.
- Transition from dirty power plants that use coal, oil and other polluting fuels to clean energy sources like wind and solar
- Generate at least 50% of California's electricity from clean energy sources by 2030
- Eventually phase out dirty energy sources and harmful gases like methane

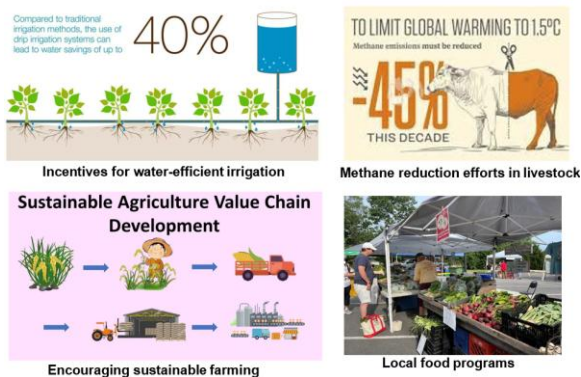
4. Human Actions that Release Heavy Amounts of Gases



- Limit as much as possible gases with high contributions to climate change (e.g., HFC and CO₂)

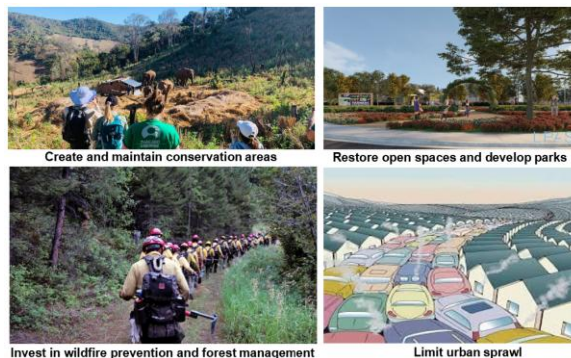
- Phase out actions that release heavy amounts of gases (like burning fossil fuels for energy, clearing forests, etc.) in multiple priority areas:
 - industry (replacing dirty fuels)
 - energy (transitioning to clean energy sources)
 - transportation (phasing out of diesel and harmful on-road and off-road equipment to Zero Emissions Vehicles)

5. Agriculture



- Deploy use of renewable energy (like wind and solar) on farms
- Modify live-stock practices to reduce methane emissions (e.g., “cow farts”).
- Restrict pesticide use
- Improve soil management practices that retain water in the soil

6. Natural and Working Lands



- Restore ecosystems including wetlands, riparian areas, tree and

- vegetation coverage (to mitigate indirect climate change effects)
- Manage forest and wildland areas to limit wildfires
- Enhance green priority areas (national parks, green infrastructure, etc. in collaboration with native communities and environmental organizations)

7. Waste



Expanded recycling and composting



Waste reduction in packaging



Encouraging zero-waste habits



Converting waste to energy

- Reduce methane at such sources of odors as landfills and farms
- Control food waste through food recovery, recycling, and waste management
- Expand organic recycling and composting as alternative sources of fertilizers

8. Water



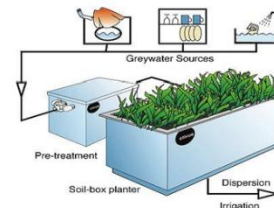
Save Water



Shower In 5 minutes



Fix leaking Toilet Immediately



Greywater for Plants

- Conserve water use with expansion in drought tolerant vegetation, low-impact development in urban areas, and reduction in permeable surfaces
- Recycle water
- Expand infrastructure to maximize rainwater capture and use
- Manage stormwater to mitigate flooding and store water deep under the earth's surface



Specific Climate Threats to Guadalupe

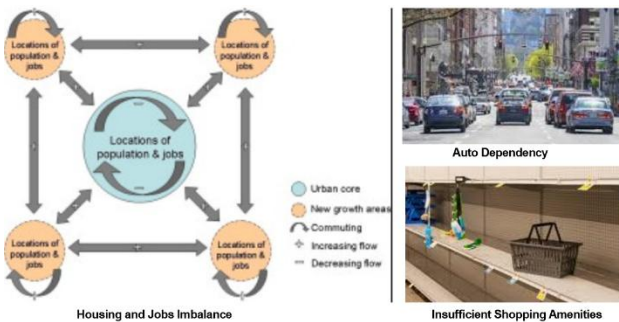
What are key climate threats facing the City of Guadalupe and its region?



- **Flooding** in certain sections of the City close to the Santa Maria River

- **Air Pollution** from on-road vehicles, off-road vehicles, and pesticide use in agricultural operations
- **Noise pollution** from roads, train, and industrial operations
- **Droughts and shortages of water** supply, which occur frequently statewide
- **Environmental injustice**, which unequally affects its vulnerable populations

Factors that exacerbate threats in Guadalupe include:



- **Housing and jobs imbalance**, which increases travel for work purposes
- High **dependency on vehicle** travel instead of alternative modes of getting around
- **Insufficiency of shopping amenities** locally, which increases travel and results in a food desert within the City.

Survey

18 Workshop Activities

Link to Survey Questions (English):
<https://docs.google.com/forms/d/1fXjwW1rICoYZVI-zcSWu1OHO9b2oSQZleZ0QH32f-0/edit>

Enlace a las preguntas de la encuesta (Espanol):
<https://docs.google.com/forms/d/1VpK9-z7RN2-2478spk2rhMGfAycNm1NDF94q0c5u9g/edit>




Link to Survey Questions (English):

<https://docs.google.com/forms/d/1fXjwW1rICoYZVI-zcSWu1OHO9b2oSQZleZ0QH32f-0/edit>

- Please complete survey questions online.
- You can follow one of these links to the English or Spanish copies of the questions
- Your participation is essential for the success of the project.
- Thank you!